

Macchine estrusione soffiaggio elettriche • Corsa 300-450 mm  
Electric extrusion blow moulding machines • Stroke 300-450mm  
Maquinás de extrusión soplado electricas • Carrera 300÷450 mm  
Machines d'extrusion soufflage electriques • Course 300÷450 mm



ITALIAN TECHNOLOGY



FORZA DI CHIUSURA MOULD CLAMPING FORCE FUERZA DE CIERRE FORCE DE FERMETURE	KN	60
---	----	----

Carro singolo / Single station /  
Estación simple / Chariot simple

Carro doppio / Double station /  
Estación doble / Chariot double

	PB6ES-300	PB6ES-380	PB6ES-450	PB6ED-300	PB6ED-380	PB6ED-450
--	-----------	-----------	-----------	-----------	-----------	-----------

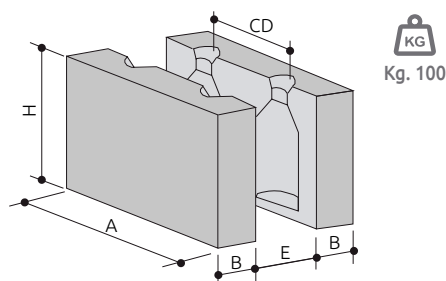
### DATI GENERALI / GENERAL DATA / DATOS GENERALES / DONNÉES GÉNÉRALES

Stampi / Moulds / Moldes / Moules	n°	1	1	1	2	2	2
Corsa / Stroke / Carrera / Course	mm	300	380	450	300	380	450
Ciclo a vuoto / Dry cycle time / Ciclo en vacío / Cadence à vide	s	1,6	1,7	1,8	1,6	1,7	1,8
Potenza motore chiusura / Motor clamping power / Potencia motor de cierre / Puissance moteur de fermeture	kW	1,2			1,2		

### CONSUMI / CONSUMPTIONS / CONSUMOS / CONSOMMATIONS

Pressione aria / Air pressure / Presión aire / Pression air	bar	6 ÷ 8			6 ÷ 8		
Consumo aria / Air consumption / Consumo aire / Consommation air	Nl/min	800			1600		
Pressione acqua / Cooling water pressure / Presión agua / Pression eau	bar	3 ÷ 5			3 ÷ 5		
Raffreddamento stampi HDPE / Mould cooling HDPE / Enfriamiento moldes HDPE / Refroidissement moules HDPE	KJ/Kg	650			650		

### STAMPO / MOULD / MOLDE / MOULE



	PB6ES-300	PB6ES-380	PB6ES-450	PB6ED-300	PB6ED-380	PB6ED-450
A mm	320	400	470	290	370	440
H mm	300			300		
B mm	85÷90			85÷90		
E mm	150			150		

### CD INTERASSE USCITE / CENTER DISTANCE / DISTANCIA ENTRE CENTROS / ENTRAXE FILIÈRES

N. Cav	2	3	4	5	6	7
C = 300	110	75	55	45	35	-
C = 380	155	100	75	60	50	-
C = 450	190	125	90	75	60	50

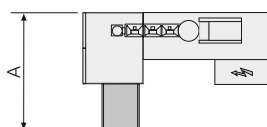
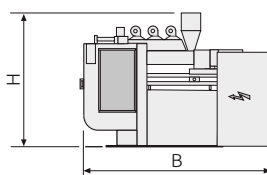
C = Corsa / Stroke / Carrera / Course

### ESTRUSORE / EXTRUDER / EXTRUSORA / EXTRUDEUSE

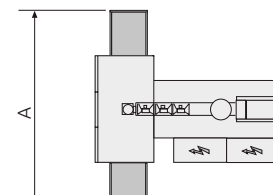
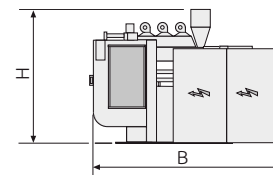
	E50/25	E60/25	E70/25	E80/25	
Diametro vite / Screw diameter / Diámetro husillo / Diamètre vis	mm	50	60	70	80
Lunghezza vite / Screw length / Largo husillo / Longueur vis	L/D	25	25	25	25
Potenza motore / Motor power / Potencia motor / Puissance moteur	kW	18	30	37	44
Plastificazione HDPE / HDPE plasticizing / Plastificación HDPE / Plastification HDPE	kg/h	56	75	110	150

### DIMENSIONI E PESO / DIMENSIONS AND WEIGHT / DIMENSIONES Y PESO / DIMENSIONS ET POIDS

	Carro singolo / Single station / Estación simple / Chariot simple	Carro doppio / Double station / Estación doble / Chariot double
	A x B x H	A x B x H
C = 300	3200 x 4400 x 3000 4100 kg	3600 x 4500 x 3000 5900 kg
C = 380	3200 x 4400 x 3000 4100 kg	3600 x 4500 x 3200 5900 kg
C = 450	3200 x 4400 x 3000 4100 kg	3660 x 4500 x 3200 5900 kg



Carro singolo / Single station / Estación simple / Chariot simple



Carro doppio / Double station / Estación doble / Chariot double